

CERTIFICATE OF LOCATION OF GOVERNMENT CORNER

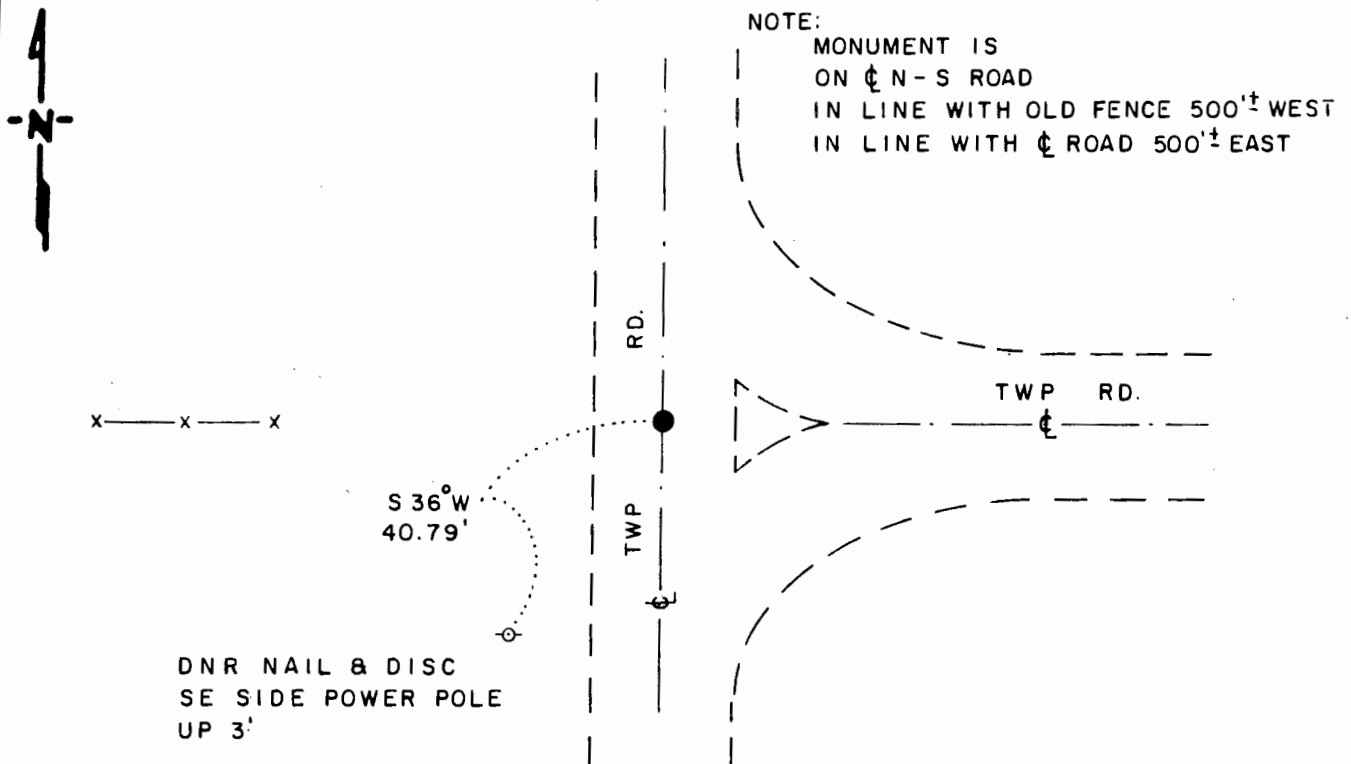
NORTHEAST Corner of Section 18, Township 107 N, Range 39 W, 5th P.M.

STATE OF MINNESOTA, County of MURRAY

At the corner location shown on the sketch

- On _____ found a _____
DATE
- left monument as found, lowered monument, removed monument (explain)
- On 10-9-91 placed a 3/4" x 24" REBAR WITH ALUMINUM CAP STAMPED
DATE "DNR SURVEY MARKER", DOWN 0.4'

SKETCH OF REFERENCE TIES



1983 MURRAY COUNTY
COORDINATE SYSTEM
N = 184,631,443
E = 553,522,136

BEARING OBSERVED WITH COMPASS

Statement of evidence relative to this corner location is on back of page

J.B.M. 11-20-91
WMA 00065.00.00.01

I hereby certify that this document and the data contained herein was prepared by me or under my direct supervision.

Bruce W. Sheppard 12-2-91
SIGNATURE DATE

Registration No. 17003

Land Surveyor, Professional Engineer

County Surveyor, County Engineer

OFFICE OF THE COUNTY RECORDER

County of MURRAY

I hereby certify that this document was filed in the Co. Recorders office at _____ M. on the _____ day of _____ A.D., 19____

County Recorder James V. Johnson
By DEC 4 1991, Deputy

DOCUMENT NO. _____

Northeast Corner of Section 18, Township 107 North, Range 39 West

The DNR Bureau of Engineering contacted the following for survey information:

Minnesota Secretary of State's Office
Murray County Recorder's Office
Murray County Highway Engineer's Office

- 1861 U.S. General Land Office notes obtained from the Secretary of State's Office show the corner marked with pits and mound.
- 1907 Surveyor's Record Book A, page 205, obtained from the County Recorder's Office contains a survey by J. W. Woolstencraft. Survey states that the government corner was found at corner. A description of a monument and a distance to it is not given.
- 1991 October, DNR Bureau of Engineering hired a backhoe to dig for evidence of a monument at corner. Dug a 10 foot north-south by 10 foot east-west by 2-1/2 foot deep hole the center being on the center line of a north-south road and in line with a fence west. No evidence of a monument was found. Set a DNR Survey Marker on the center line of the north-south road and in line with the fence west and found it to be:
in line with the westerly projection of the center line of road east
2645.77 feet from the north quarter corner of Section 18
2631.69 feet from the east quarter corner of Section 7

Analysis of the above information led the DNR Bureau of Engineering to conclude that the intersection of the center line of the north-south road and fence line west marks the obliterated position of the corner.